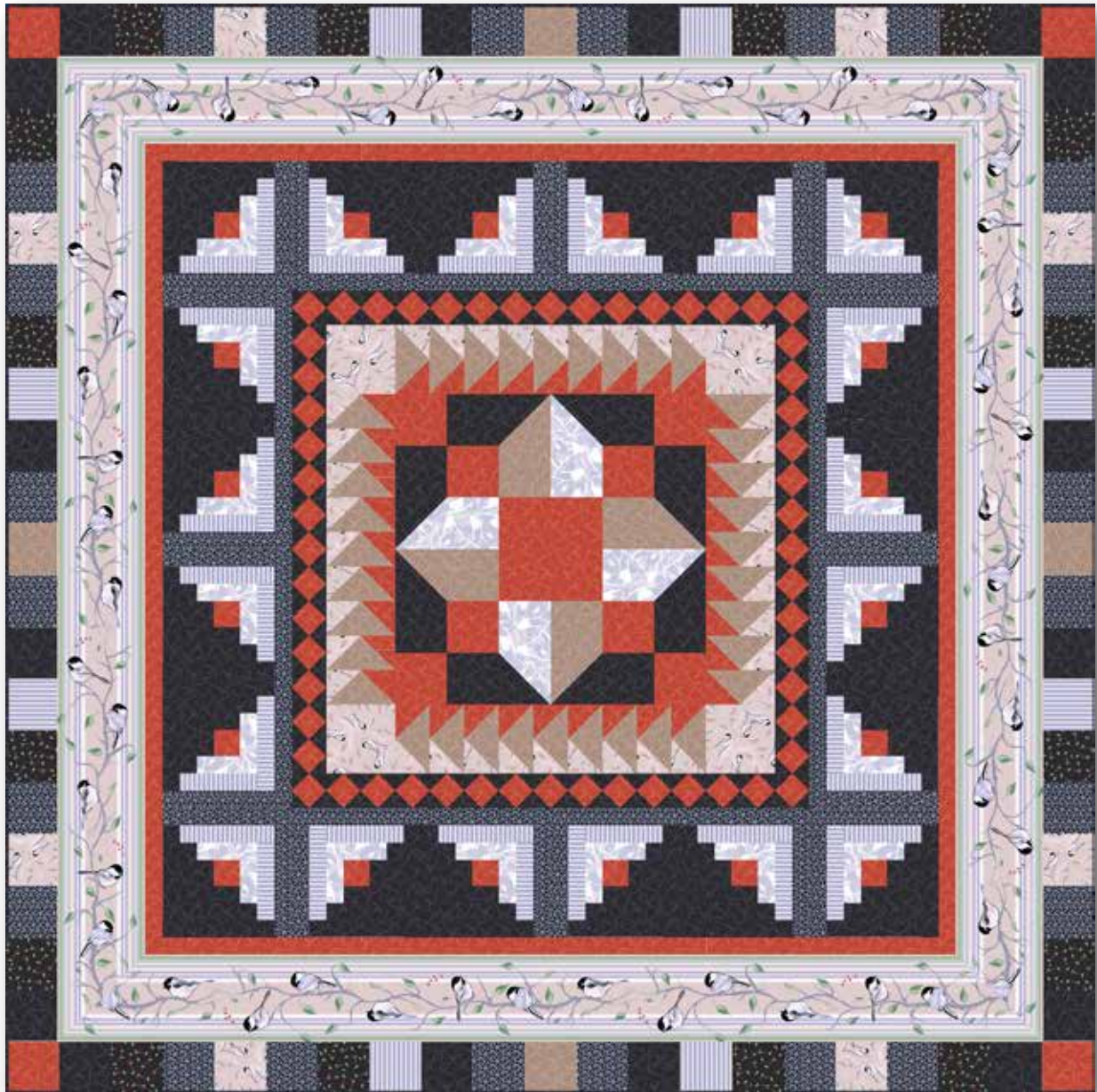




PRESENTS

Fabrics by Jamie Kalvestran

Chickadee



Quilt designed by Jamie Kalvestran

Quilt size: 63" x 63"



makower uk[®]

www.andoverfabrics.com

Chickadee Quilt

Introducing Andover Fabrics new collection: Chickadee by Jamie Kalvestran

Quilt designed by Jamie Kalvestran

Fabric Requirements

	Yardage	Fabric-
Fabric A border	1 $\frac{3}{4}$ yards	7027-L
Fabric B blocks	$\frac{3}{8}$ yard	7029-LC
Fabric C borders	$\frac{1}{2}$ yard	7030-L
Fabric D blocks, border	$\frac{3}{4}$ yard	7031-LC
Fabric E border	$\frac{1}{4}$ yard	7032-LK
*Fabric F blocks, border	2 yards	7033-LK
Fabric G blocks, border	$\frac{3}{4}$ yard	7033-LN
Fabric H blocks, borders	1 yard	7033-LR
Fabric I blocks, border	$\frac{1}{2}$ yard	7034-LC
Backing	3 $\frac{3}{4}$ yards	7028-L
*includes binding		

Quilt finishes 63" x 63"

20 Log Cabin Blocks: 7 $\frac{1}{2}$ " x 7 $\frac{1}{2}$ "

4 Center Blocks: 9" x 9"

One of the most charming birds in North America is the chickadee, with its lilting chirp and quick, bouncy movements. The state bird of both Maine and Massachusetts, it can be found in much of the U.S. year round. The colors of the little bird are shown in these fabrics, with a bit of red for added spark.

Cutting Directions

Note: Read assembly directions before cutting patches.

All measurements are cut sizes and include $\frac{1}{4}$ " seam allowances. Borders are cut the exact lengths required plus $\frac{1}{4}$ " seam allowances. The mitered stripe border includes extra length for insurance. WOF designates the width of fabric from selvedge to selvedge (approximately 42" wide).

Fabric A Fussy-cut (4) borders 5 $\frac{1}{2}$ " x 59 $\frac{1}{2}$ ", cut lengthwise

Fabric B Cut (20) rectangles 1 $\frac{1}{2}$ " x 4"
Cut (20) rectangles 1 $\frac{1}{2}$ " x 3"
Cut (2) squares 3 $\frac{7}{8}$ " x 3 $\frac{7}{8}$ ", cut in half diagonally to make 4 half-square triangles
Cut (4) squares 3 $\frac{1}{2}$ " x 3 $\frac{1}{2}$ "

Fabric C Cut (4) squares 4 $\frac{1}{2}$ " x 4 $\frac{1}{2}$ "
Cut (8) squares 3 $\frac{1}{2}$ " x 3 $\frac{1}{2}$ "
Cut (36) squares 2 $\frac{1}{2}$ " x 2 $\frac{1}{2}$ "

Fabric D Cut (24) squares 3 $\frac{1}{2}$ " x 3 $\frac{1}{2}$ "
Cut (20) rectangles 1 $\frac{1}{2}$ " x 8"
Cut (20) rectangles 1 $\frac{1}{2}$ " x 7"

Fabric E Cut (16) squares 3 $\frac{1}{2}$ " x 3 $\frac{1}{2}$ "

Fabric F Cut (7) strips 2 $\frac{1}{2}$ " x WOF for binding
Cut (4) squares 3 $\frac{7}{8}$ " x 3 $\frac{7}{8}$ ", cut in half diagonally to make 8 half-square triangles
Cut (24) squares 3 $\frac{1}{2}$ " x 3 $\frac{1}{2}$ "
Cut (20) rectangles 1 $\frac{1}{2}$ " x 7"
Cut (20) rectangles 1 $\frac{1}{2}$ " x 6"
Cut (20) rectangles 1 $\frac{1}{2}$ " x 5"
Cut (20) rectangles 1 $\frac{1}{2}$ " x 4"
Cut (20) rectangles 1 $\frac{1}{2}$ " x 3"
Cut (20) rectangles 1 $\frac{1}{2}$ " x 2"
Cut (224) squares 1 $\frac{1}{2}$ " x 1 $\frac{1}{2}$ "

Fabric G Cut (36) rectangles 2 $\frac{1}{2}$ " x 4 $\frac{1}{2}$ "
Cut (2) squares 3 $\frac{7}{8}$ " x 3 $\frac{7}{8}$ ", cut in half diagonally to make 4 half-square triangles
Cut (8) squares 3 $\frac{1}{2}$ " x 3 $\frac{1}{2}$ "

Fabric H Cut (2) borders 1 $\frac{1}{2}$ " x 47 $\frac{1}{2}$ ", cut crosswise and pieced
Cut (2) borders 1 $\frac{1}{2}$ " x 45 $\frac{1}{2}$ ", cut crosswise and pieced
Cut 16 squares 3 $\frac{1}{2}$ " x 3 $\frac{1}{2}$ "
Cut (92) squares 2 $\frac{1}{2}$ " x 2 $\frac{1}{2}$ "
Cut (20) squares 2" x 2"

Fabric I Cut (8) squares 3 $\frac{1}{2}$ " x 3 $\frac{1}{2}$ "
Cut (20) rectangles 1 $\frac{1}{2}$ " x 6"
Cut (20) rectangles 1 $\frac{1}{2}$ " x 5"

Backing Cut (2) panels 34" x 67", pieced to fit quilt top with overlap on all sides

Chickadee Quilt

Making and Assembling the Quilt

1. Referring to the Center Block diagram, join $3\frac{7}{8}$ " triangles to make pieced squares. Join the pieced squares with plain $3\frac{1}{2}$ " squares to make a block. Make 4. Join 4 blocks to make the center square, rotating blocks as shown.
2. Draw a diagonal line on the wrong side of Fabric C $2\frac{1}{2}$ " squares and 36 Fabric H $2\frac{1}{2}$ " squares. Place a marked square on one end of a Fabric G $2\frac{1}{2}$ " x $4\frac{1}{2}$ " rectangle, right sides together. Sew on the marked line; trim away and discard excess fabric (Diagram 1). Press open. Repeat this process on the opposite end of the rectangle using a Fabric H square (Diagram 2). Trim and press the triangle open to make a Flying Geese Unit. Make 36 total.

Sew 9 Flying Geese units side by side to make a pieced border, keeping the units oriented as shown in the Quilt Diagram. Make 4 borders. Sew 2 borders to sides of the quilt center, referring to the Quilt Diagram for orientation. Sew Fabric C $4\frac{1}{2}$ " squares to ends of remaining borders. Sew to the top and bottom.

3. The red and black pieced border is made with a quick stitch and flip method. Draw a diagonal line on the wrong side of 4 Fabric F $1\frac{1}{2}$ " squares. Referring to Diagram 3, place a marked square on a Fabric H $2\frac{1}{2}$ " square, right sides together, aligning raw edges at the corner. Stitch on the drawn line; trim away and discard excess fabric. Press open. Repeat on the opposite corner, watching orientation of the sewing line (Diagram 4). Repeat on the remaining corners. Hint: Once you feel comfortable stitching the diagonal line, you may not need to mark it on the back of the black squares. Make 56 Border Squares.

Join 13 Border Squares to make a pieced border. Sew to the side of the quilt. Repeat for the other side. Join 15 Border Squares to make the top and bottom borders. Sew to the quilt.

4. Refer to the Log Cabin Block diagram. Sew the appropriate strips in order around a red 2" square, moving in a counterclockwise direction. Make 20 blocks.

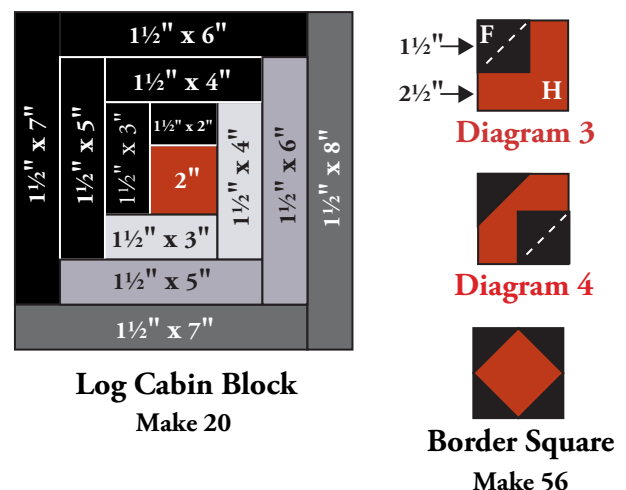
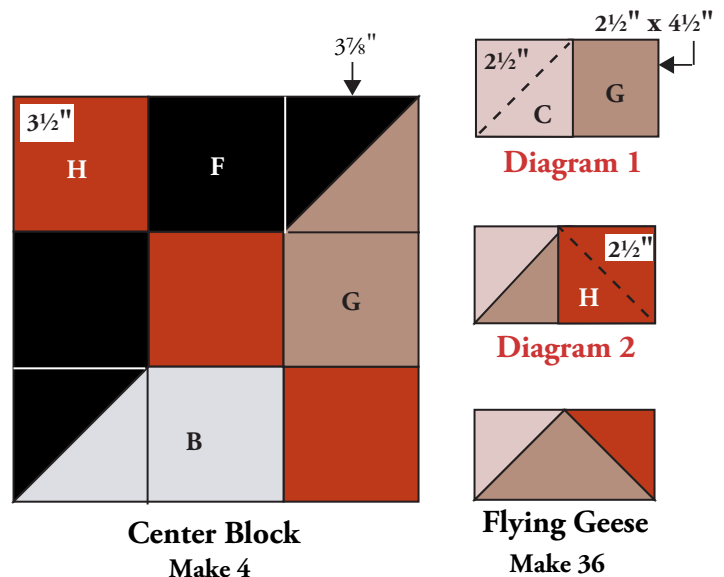
Referring to the Quilt Diagram, join 4 Log Cabin Blocks to make a side border, orienting the blocks as shown. Sew to the side. Repeat for the other side. Join 6 Log Cabin Blocks to make the top border. Sew to the top. Repeat for the bottom.

5. Sew the shorter red borders to the sides. Sew the longer red borders to the top and bottom.

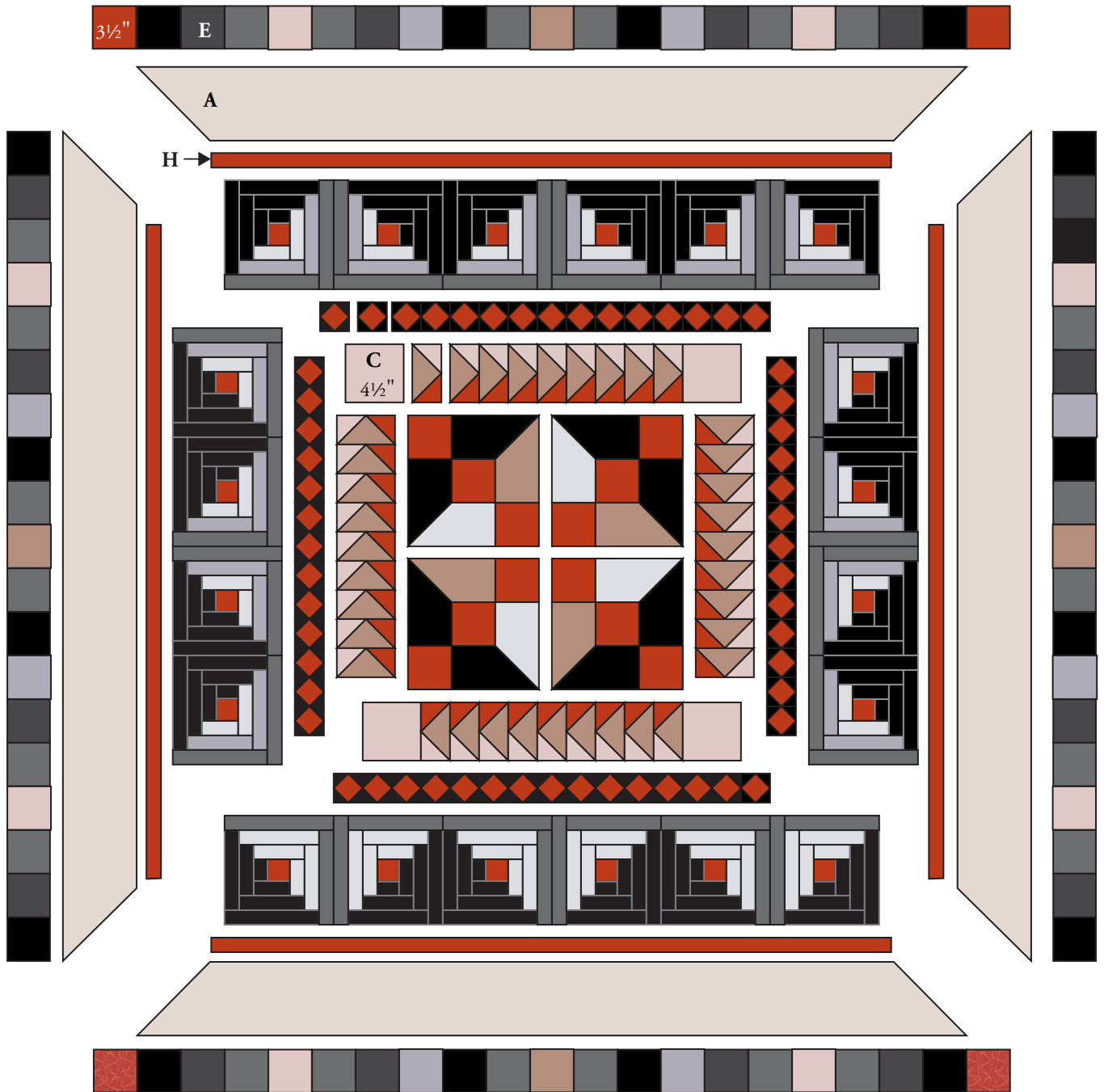
6. Sew the Fabric A borders to the quilt, starting and stopping stitching $\frac{1}{4}$ " from the edges of the quilt. Miter the corners, trim the excess fabric, and press the seam allowances open.
7. Referring to the Quilt Diagram, join 19 squares in the order shown to make the outer pieced border. Make 4 borders like this. Sew borders to the sides of the quilt. Sew a red square to the ends of remaining borders. Sew to the top and bottom.

Finishing the Quilt

8. Layer the quilt with batting and backing; baste. Quilt in the ditch around block patches. Quilt around the printed motifs in the wide border. Bind to finish the quilt.



Chickadee Quilt



Quilt Diagram

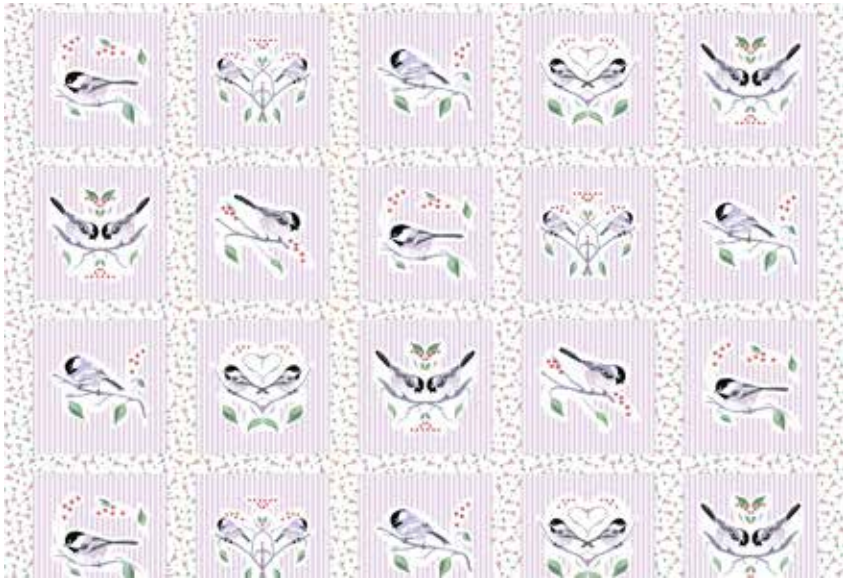
Chickadee

by Jamie Kalvestran



makower uk®

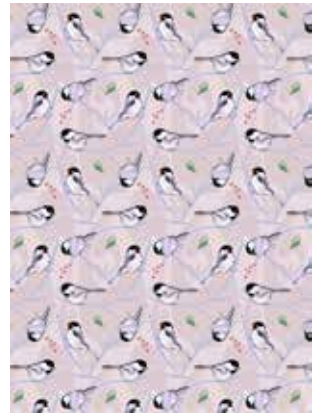
1384 Broadway
New York, NY 10018
(800) 223-5678
www.andoverfabrics.com



7026-L



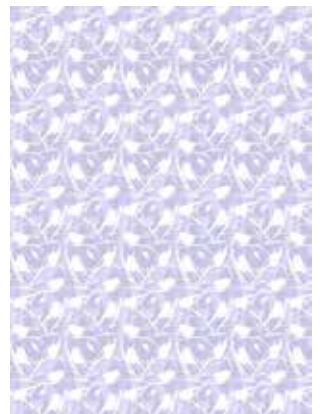
7028-L*



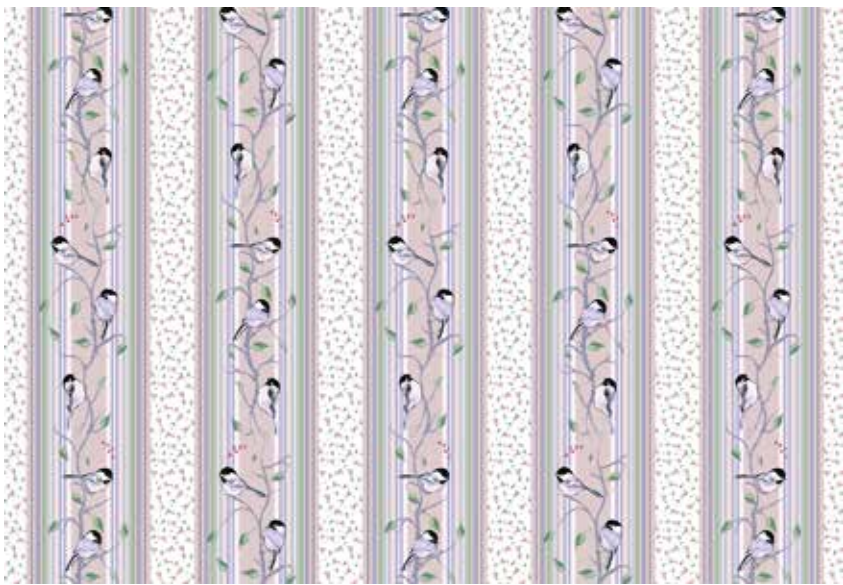
7028-LC



7029-L



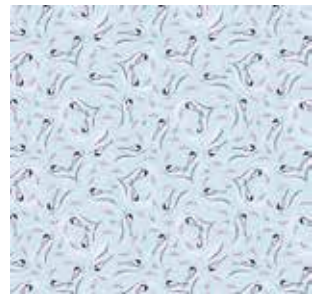
7029-LC*



7027-L*



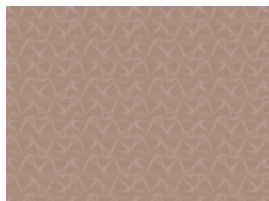
7030-L*



7030-LG



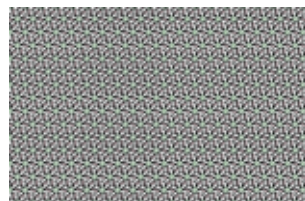
7033-LK*



7033-LN*



7033-LR*



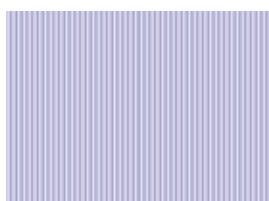
7031-L



7031-LC*



7034-L



7034-LC



7034-LG



7032-L



7032-LK*

*Indicates fabric used in quilt pattern. Fabrics shown are 10% of actual size.

Free Pattern Download Available at www.andoverfabrics.com

12/18/12