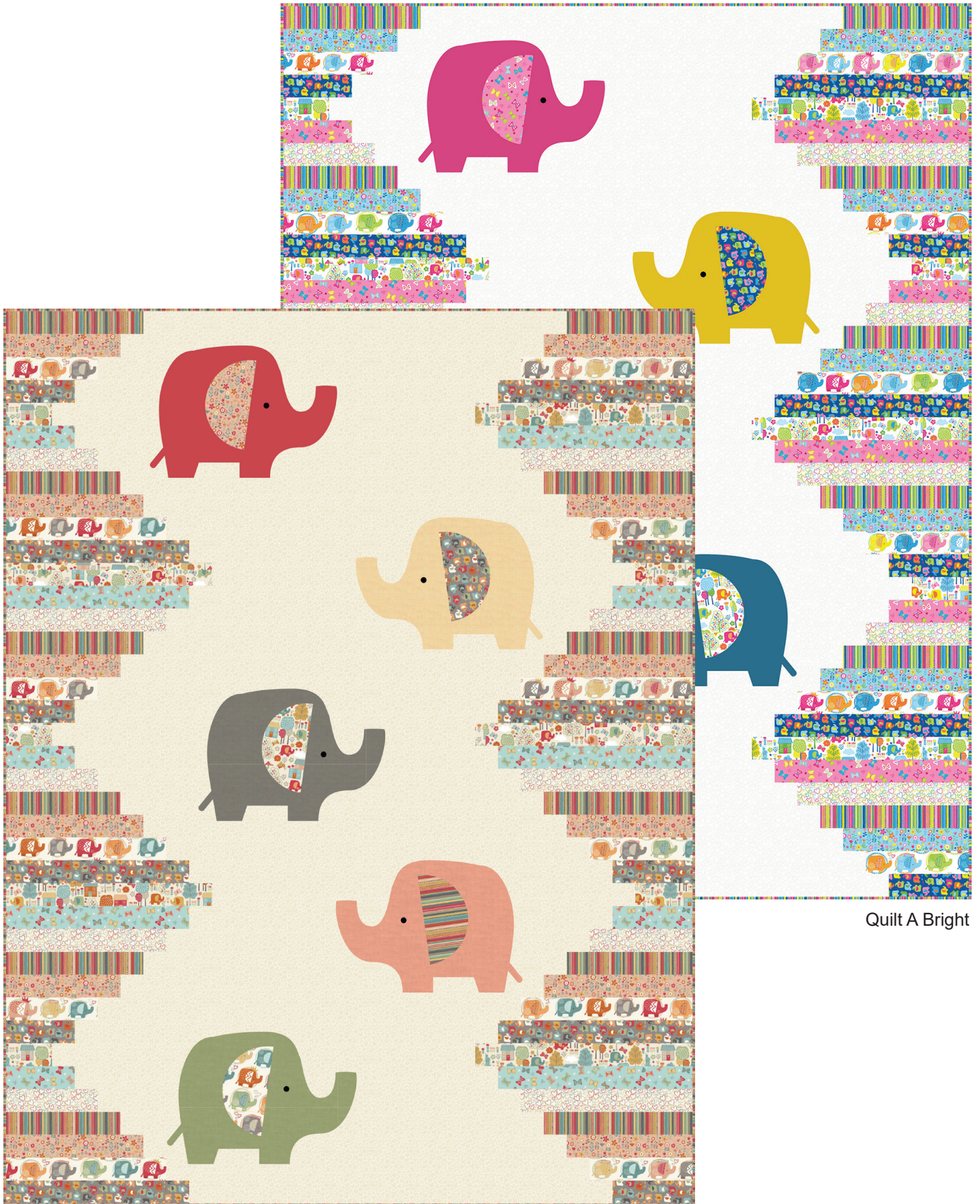


# Ellie

Finished size 60" x 78" (1.50m x 2.0m)

Designed by Lynne Goldsworthy of [lilysquilts.blogspot.com](http://lilysquilts.blogspot.com)  
using the Ellie collection from Makower UK [www.makoweruk.com](http://www.makoweruk.com)



Quilt A Bright

Quilt B Teal

# Ellie

Finished size 60" x 78" (1.50m x 2.0m)

Designed by Lynne Goldsworthy of [lilysquilts.blogspot.com](http://lilysquilts.blogspot.com)  
using the Ellie collection from Makower UK [www.makoweruk.com](http://www.makoweruk.com)

## Fabric Requirements

Quilt A	Quilt B	Description	Amount	Cut
1313 P2	1313 T2	Dotty Stripe	1 metre 1 yard	One 8 ½" WOF strip cut into two 5" x 8 ½" rectangles (P*). Cut the remainder into three 2 ½" WOF strips. Cut two more 2 ½" WOF strips. Cut the 2 ½" WOF strips into into six 10 ½" and six 12 ½" lengths Seven 2 ½" WOF strips (for binding).
1473 P5	1473 G4	Linen Texture	One FQ	One Elephant
1473 Y5	1473 P	Linen Texture	One FQ	One Elephant
1473 N4	1473 Q3	Linen Texture	One FQ	One Elephant
1473 T4	1473 R4	Linen Texture	One FQ	One Elephant
1473 G7	1473 S4	Linen Texture	One FQ	One Elephant
1909 W1	1909 Q2	Essential Hearts	2 ¾ m 3 yards	Thirty-nine 2 ½" WOF strips each trimmed to 38 ½" long
2066 P	2066 T	Elephants	¾ m / ¾ yd	<b>See cutting instructions</b>
2066 P	2066 T	Elephants (for backing)	4 ½ m 4 ¾ yds	Two equal lengths <b>NB only 3 ½ m or 3 ¾ yards if non directional print used</b>
2067 B	2067 P	Floral	<b>Quilt A</b> 30cm/12"  <b>Quilt B</b> 40cm / 15"	<b>Quilt A:</b> Six 2 ½" x 10 ½" strips and six 2 ½" x 12 ½" strips  <b>Quilt B:</b> One 8 ½" WOF strip cut into two 5" x 8 ½" rectangles (P). Cut the remainder into three 2 ½" WOF strips. Cut two more 2 ½" WOF strips. Cut the 2 ½" WOF strips into six 10 ½" and six 12 ½" lengths
2068 P	2068 T	Butterflies	<b>Quilt A</b> 40cm / 15"  <b>Quilt B</b> 30cm/12"	<b>Quilt A:</b> One 8 ½" WOF strip cut into two 5" x 8 ½" rectangles (P). Cut the remainder into three 2 ½" WOF strips. Cut one more 2 ½" WOF strip. Cut the 2 ½" WOF strips into five 6 ½" and five 16 ½" lengths  <b>Quilt B:</b> Five 2 ½" x 6 ½" strips and five 2 ½" x 16 ½" strips
2069 B	2069 V	Mini Elephant	40cm / 15"	One 8 ½" WOF strip cut into two 5" x 8 ½" rectangles (P). Cut the remainder into three 2 ½" WOF strips. Cut two more 2 ½" WOF strips. Cut the 2 ½" WOF strips into six 6 ½" and six 16 ½" lengths
2070 P	2070 T	Scenic	40cm / 15"	One 8 ½" WOF strip cut into two 5" x 8 ½" rectangles (P). Cut the remainder into three 2 ½" WOF strips. Cut two more 2 ½" WOF strips. Cut the 2 ½" WOF strips into five 4 ½" and five 18 ½" lengths
2071 P	2071 T	Hearts	30cm/12"	Five 2 ½" x 8 ½" strips and five 2 ½" x 14 ½" strips

Wadding	1.7m x 2.2m (68" x 86") <b>plus scraps</b>	279 Cotton Mix 80-20 from <a href="http://www.vlieseline.com/en">http://www.vlieseline.com/en</a>
Threads		Aurifil 50wt for piecing and 40wt for quilting from <a href="http://www.aurifil.com">http://www.aurifil.com</a>
Templates		Templates A to G
Fusible Web 18" / 45cm wide	2 m / 2 yds	Bondaweb from <a href="http://www.vlieseline.com/en">http://www.vlieseline.com/en</a>
Dark fabric		Small scraps for eyes (optional)

\*P = cut portrait style

### Notes:

- Read the pattern in full before starting.
- ¼" seams are used throughout except where stated otherwise.
- Press after each seam, pressing seams open or to one side as preferred.
- WOF - width of fabric - a strip of fabric cut from selvedge to selvedge.
- Make sure to visit <http://www.makoweruk.com/projects/> to ensure you are working from the most up-to-date version of the pattern.

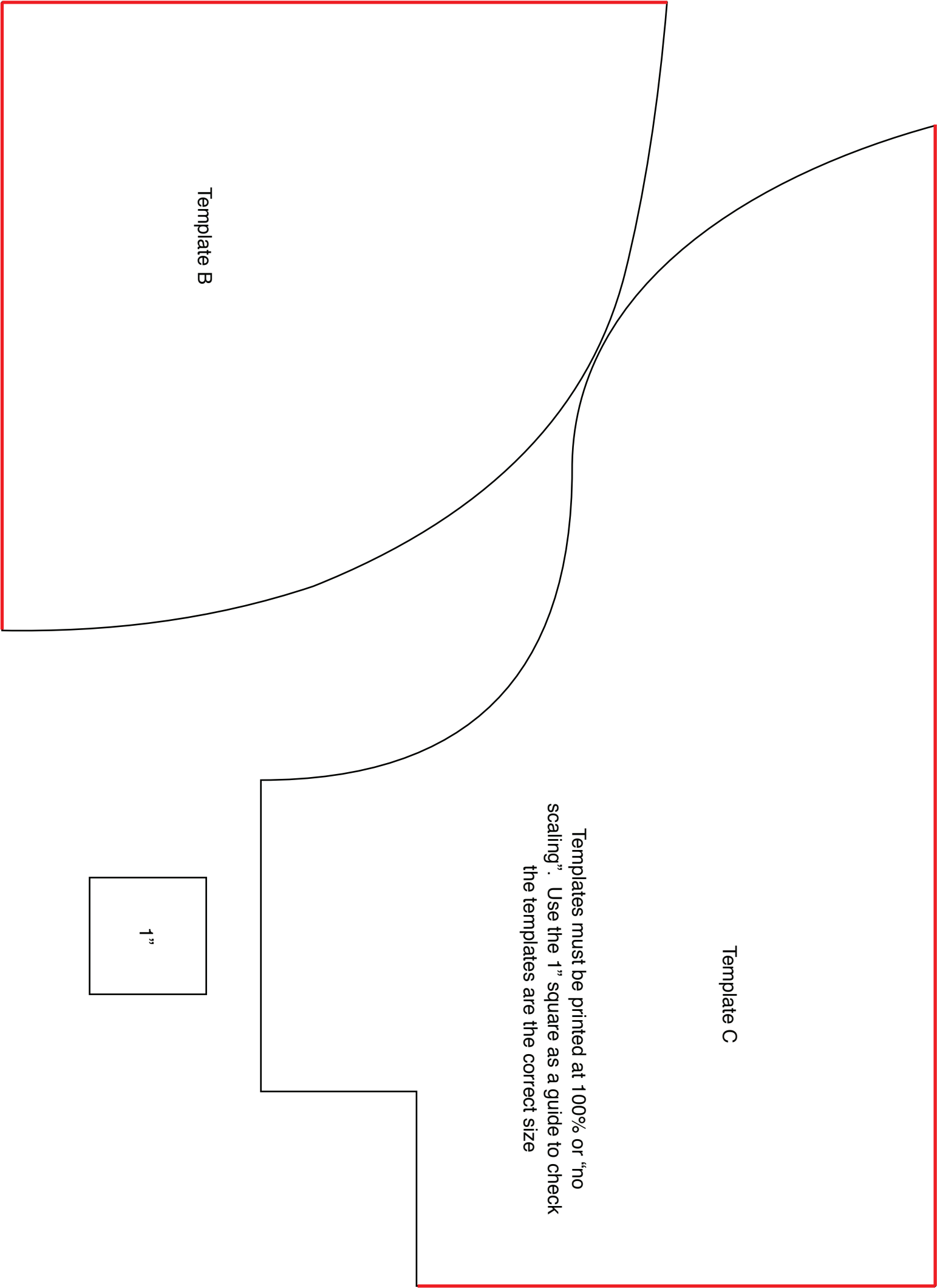
### Making the quilt top

1. Cut the fabrics as shown in the fabric requirements table. Extra fabric is provided for the large elephants print (2066 T / P) so that the 2 ½" WOF strips can be fussy cut. First cut two 5" x 8 ½" rectangles (P). From the remainder cut six 2 ½" x 8 ½" and six 2 ½" x 14 ½" strips as described below. Cut the 2 ½" WOF strips so that the elephants will sit in the middle of each strip. Take care to cut the three 8 ½" and three 14 ½" strips for the left and side of the quilt so that a whole elephant will sit on the right end of each strip. Take care to cut the three 8 ½" and three 14 ½" strips for the right and side of the quilt so that a whole elephant will sit on the left end of each strip.
2. Carefully following the main quilt image diagram opposite, sew the 2 ½" strips of print fabric to either end of each of the 2 ½" x 38 ½" strips of cream hearts fabric. Take care that the directional prints (including the cream hearts) are orientated so that they are the right way up. The main quilt image diagram shows the finished size of each print strip.
3. Sew the strips into five sets – the dashed black lines on the main quilt image show the five sections to be sewn.
4. Tape the A-D templates together at the red lines to make the elephant template – the tail (E) and eye (F) templates are also on this sheet.
5. Trace the elephant and the tail templates onto Bondaweb. **NB: remember that you are tracing in reverse so three traced elephants should face left and two should face right.**
6. Fuse to the back of the linen texture FQs, again taking care that each elephant will face the correct way once cut out. Cut out each elephant and tail.
7. Place each elephant and tail (with the tail tucked underneath the elephant) onto each set of strips, following the placement in the main quilt image diagram. Fuse in place then stitch around the edges to secure using a straight, zigzag or blanket stitch in coordinating thread.
8. Eyes can be added either by hand or machine embroidering with black thread or by tracing the eye templates onto Bondaweb, fusing onto scraps of dark fabric and fusing then stitching onto the elephants.
9. Sew the five strip sets together to finish the quilt top (the ears will be added at the very end).



### Finishing the quilt

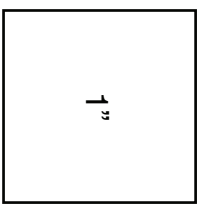
1. Sew the binding strips end to end using diagonal or straight seams as preferred and press wrong sides together along the length to make a double fold binding.
2. Make a quilt sandwich, basting together the quilt back, the wadding and the quilt top.
3. Quilt as desired then trim the quilt square, removing excess wadding and backing. We quilted wavy lines approximately 1" apart using a cream 40wt Aurifil thread on the front and back.
4. Bind the quilt taking care to mitre the corners.
5. Cut out two ear templates (Template G) for each print from the 5" x 8 1/2" rectangles making sure that the directional prints will lie in the correct direction (see ear orientation on the main quilt image diagram).
6. Pin the pairs of ear pieces right sides together with a 7" x 11" piece of wadding pinned to the back. Trim the wadding 1/2" from the edge of the elephant ear pieces (so that when the straight edges of the fabric are folded in to finish the ear pieces, they can be folded over the wadding).
7. Sew together with a 1/4" seam, leaving the straight side unsewn. Trim away excess wadding as close to the seam line as you can, clip the curves, turn inside out and press. Fold the straight edge inside and sew that edge of the ears to the elephants so that the ears can flap open.

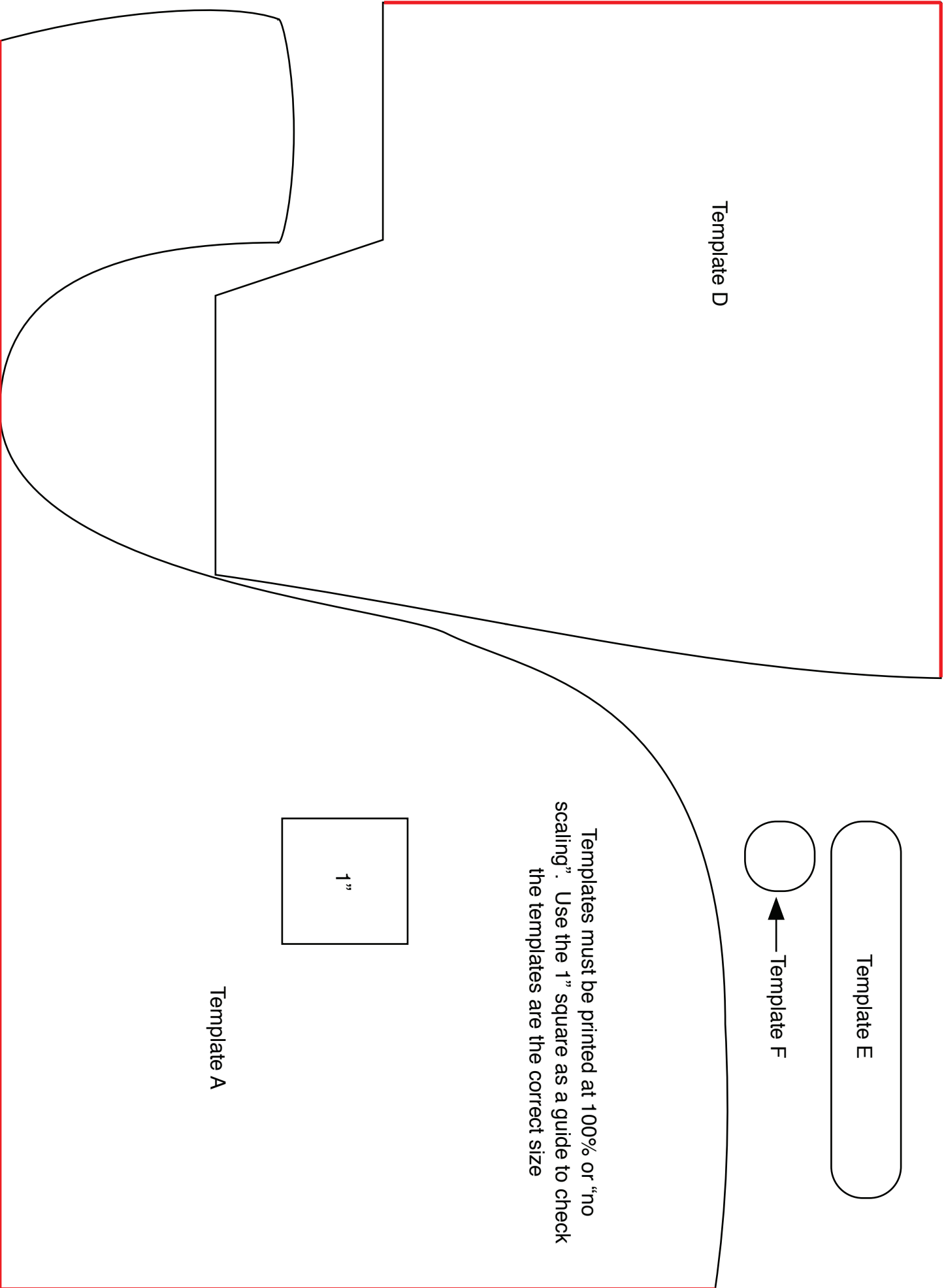


Template B

Template C

Templates must be printed at 100% or "no scaling". Use the 1" square as a guide to check the templates are the correct size





Template D

Template E

Template F

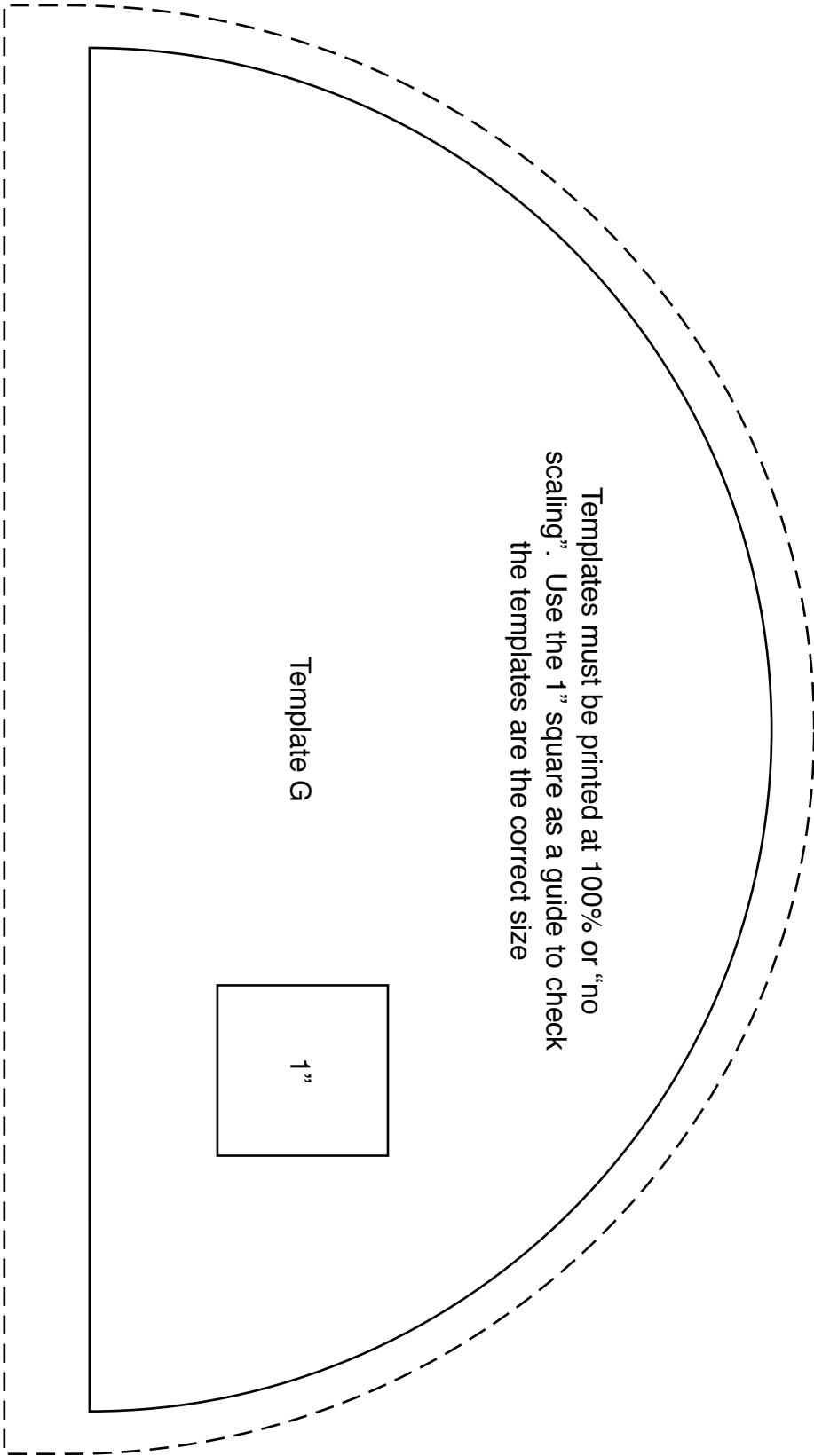
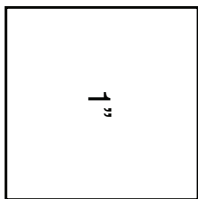
Templates must be printed at 100% or "no scaling". Use the 1" square as a guide to check the templates are the correct size

1"

Template A

Templates must be printed at 100% or "no scaling". Use the 1" square as a guide to check the templates are the correct size

Template G





2066/T Elephants



1313/T2 Dotty Stripe



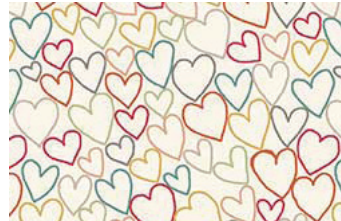
2070/T Scenic



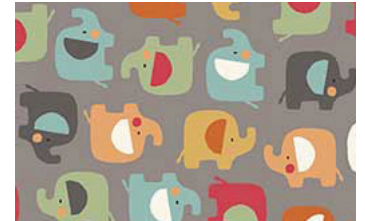
2068/T Butterflies



2067/P Floral



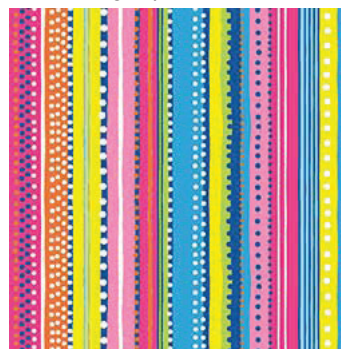
2071/T Hearts



2069/V Mini Elephant



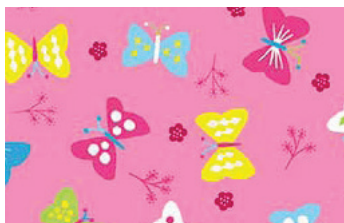
2066/P Elephants



1313/P2 Dotty Stripe



2070/P Scenic



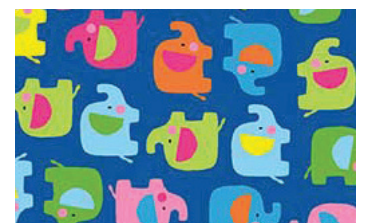
2068/P Butterflies



2067/B Floral



2071/P Hearts



2069/B Mini Elephant



1473/Q3 Linen texture



1473/P5 NEW Linen texture



1473/G4 Linen texture



1473/Y5 NEW Linen texture



1473/P Linen texture



1473/N4 NEW Linen texture



1473/R4 NEW Linen texture



1473/T4 NEW Linen texture



1473/S4 Linen texture



1473/G7 NEW Linen texture



Finished size 60" x 78" (1.50m x 2.0m)

Designed by Lynne Goldsworthy of  
lilysquilts.blogspot.com using the Ellie collection from  
Makower UK www.makoweruk.com