

Nara

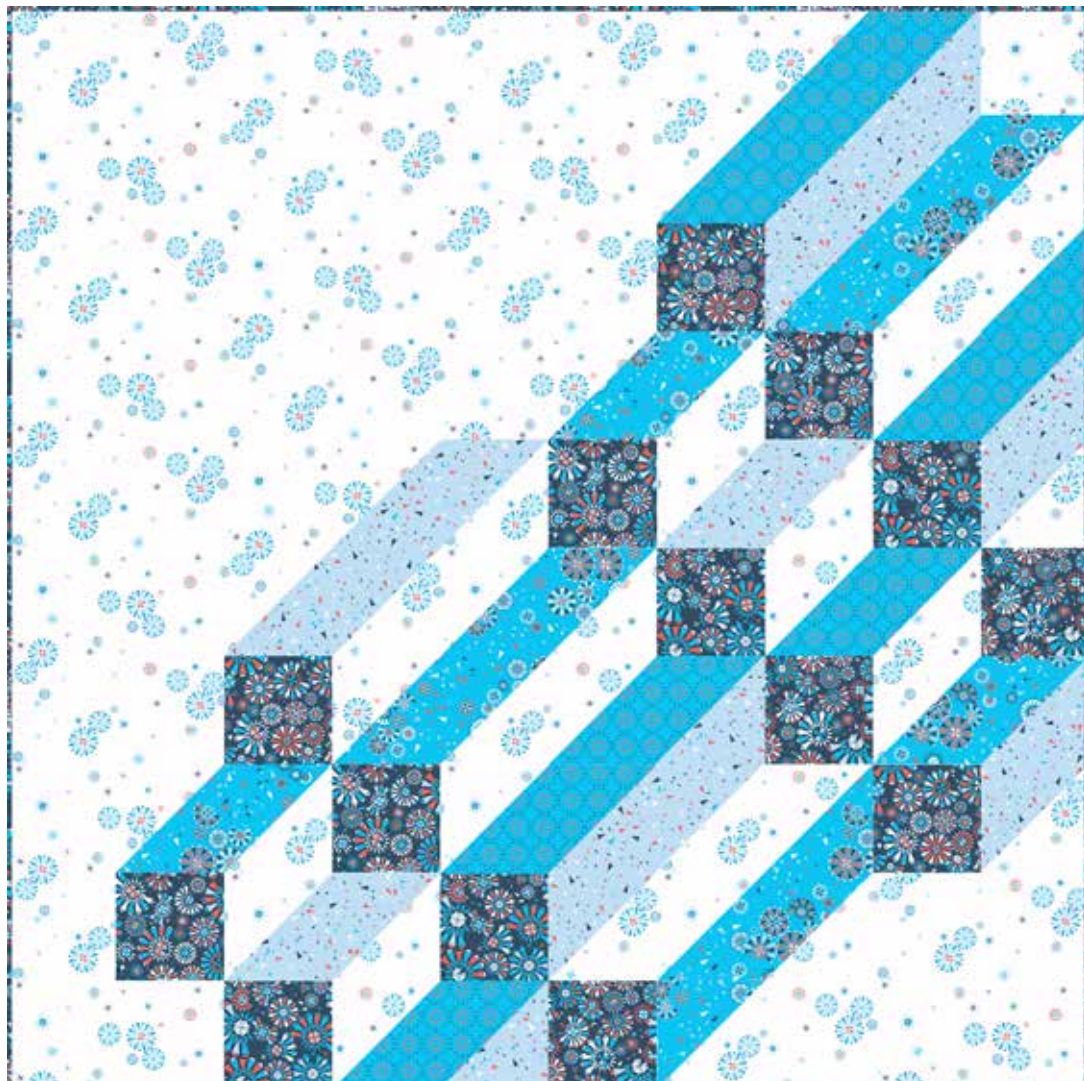
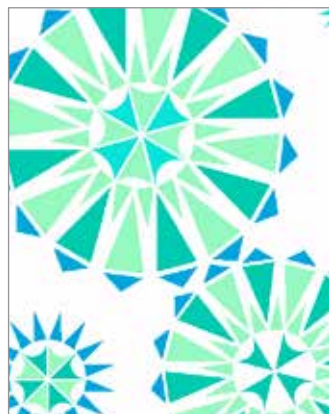
FABRICS BY FIYEL LEVENT



Rise Up Quilt designed
by: **Pink Hippo Quilts**

Quilt Size: 60" x 60"

andoverfabrics.com



About Nara

The city of Nara in Japan has a lot to do with the Silk Road; it was greatly involved in the silk and textile trade. There is a temple which is constructed in the same style and using the same techniques as temples in Chinese cities along the Silk Road. So in fact, the name Nara has a lot to do with my work and even more specifically, this collection with Andover. — *Fiyel Levent*

andover



makower uk
The Henley Studio

Free Pattern Download Available

1384 Broadway New York, NY 10018
Tel. (800) 223-5678 • andoverfabrics.com

Rise Up Quilt



Introducing Andover Fabrics new collection: **NARA** by Fiyel Levent

Quilt designed by Pink Hippo Quilts

Quilt finishes 60" x 60"

This novel quilt has a fresh, contemporary design that is sure to please anyone who is looking for a modern take on a traditional art. The patchwork is simple half-square triangles made from a cool palette of blues and teals with a splash of red.

Cutting Directions

Note: Read assembly directions before cutting patches. All measurements are cut sizes and include $\frac{1}{4}$ " seam allowances. WOF designates the width of fabric from selvedge to selvedge (approximately 42" wide).

Fabric A Cut (7) strips $2\frac{1}{2}$ " x WOF for binding
Cut (14) squares $6\frac{1}{2}$ " x $6\frac{1}{2}$ "

Fabric B Cut (9) squares $6\frac{7}{8}$ " x $6\frac{7}{8}$ " for HST

Fabric C Cut (1) square $24\frac{1}{2}$ " x $24\frac{1}{2}$ "
Cut (2) rectangles $12\frac{1}{2}$ " x $18\frac{1}{2}$ "
Cut (1) square $12\frac{1}{2}$ " x $12\frac{1}{2}$ "
Cut (2) rectangles $6\frac{1}{2}$ " x $12\frac{1}{2}$ "
Cut (5) squares $6\frac{1}{2}$ " x $6\frac{1}{2}$ "
Cut (18) squares $6\frac{7}{8}$ " x $6\frac{7}{8}$ " for HST

Fabric D Cut (8) squares $6\frac{7}{8}$ " x $6\frac{7}{8}$ " for HST

Fabric E Cut (11) squares $6\frac{7}{8}$ " x $6\frac{7}{8}$ " for HST

Backing Cut (2) panels 35 " x 68 ", pieced to fit quilt top with overlap on all sides

Fabric Requirements

		Yardage	Fabric
Fabric A	setting, binding	1 yard	7545-B
Fabric B	setting	$\frac{1}{2}$ yard	7546-B
Fabric C	background	2 yards	7547-B
*Fabric D	setting	$\frac{1}{2}$ yard	7548-B
Fabric E	setting	$\frac{1}{2}$ yard	7549-B
*Backing		4 yards	7548-B

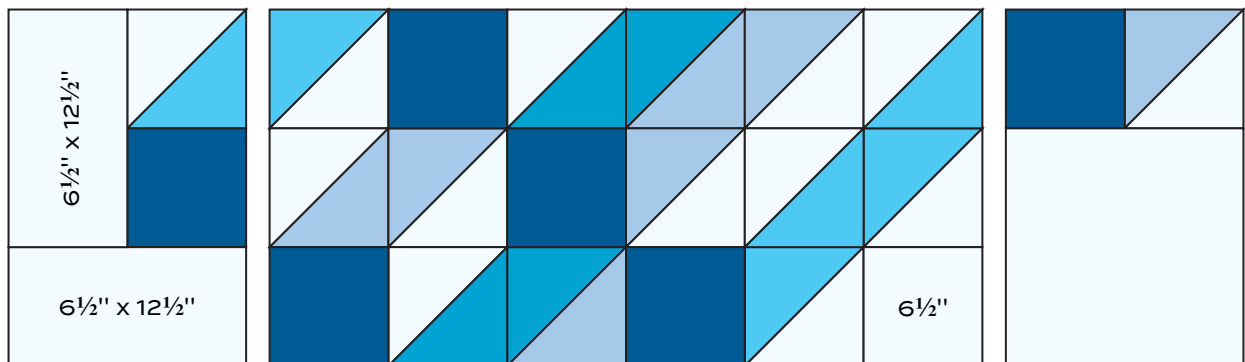
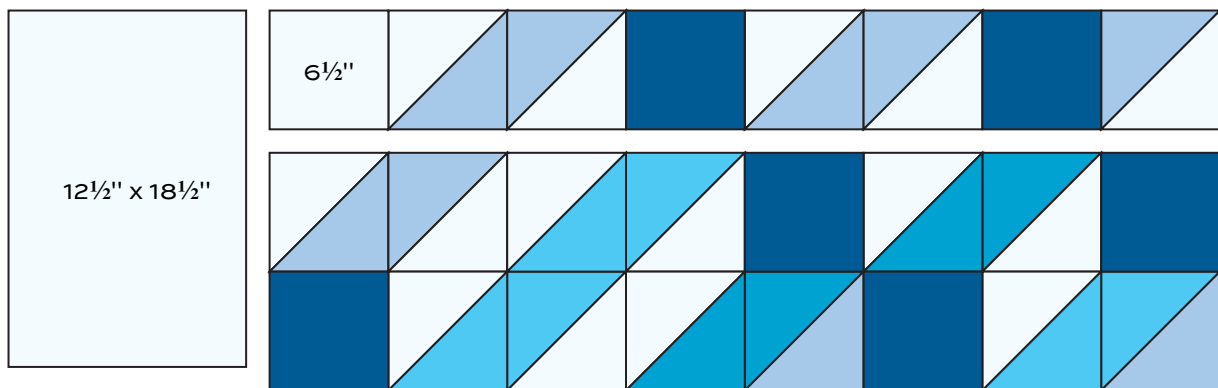
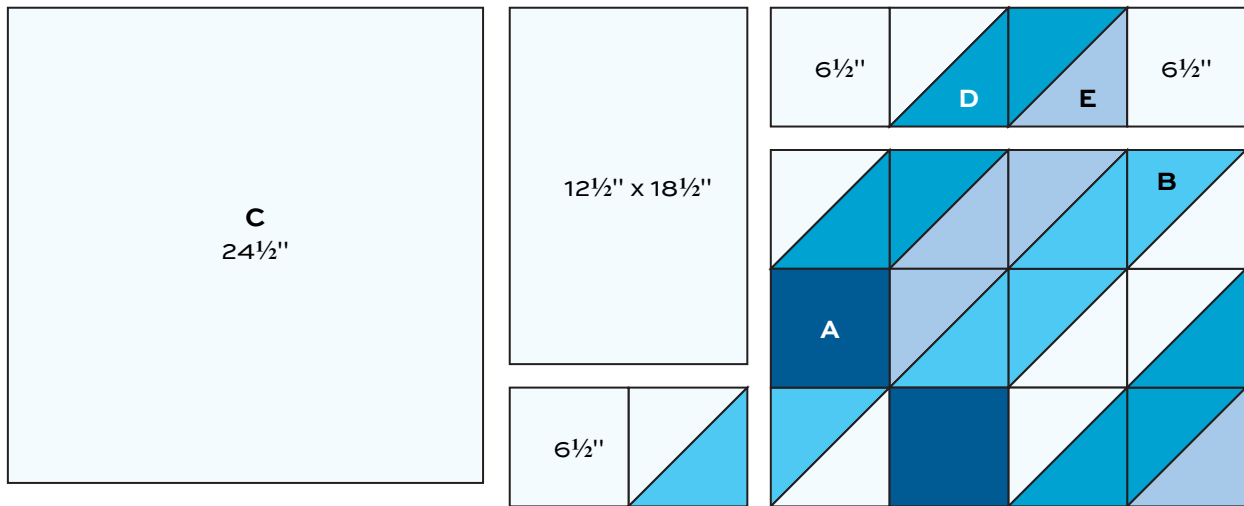
Making the Quilt

1. The design is made with half-square triangles (HST) that finish 6" square. Use your favorite method to make HST, or follow these directions. Draw a diagonal line on the wrong side of all Fabric C $6\frac{7}{8}$ " squares and 5 Fabric E $6\frac{7}{8}$ " squares. Place a marked Fabric C square on a Fabric B square, right sides together. Sew $\frac{1}{4}$ " seam on each side of the marked line; cut apart on the marked line. Press open to make pieced HST. Referring to the Quilt Diagram, make HST in the combinations shown. Note that many of the HST are made with Fabric C patches combined with the blue or aqua squares. Some are made with Fabric E in combination with the other teal and aqua squares. Make a total of 45 HST.
2. Refer to the Quilt Diagram. Work on a large design wall or flat surface so that you can be assured that the design is correct. Arrange and join the HST with the Fabric C background patches in the units shown. Note that a couple of the HST aren't needed. Join smaller units to make larger units. Finally, join the large pieced rows.

Finishing the Quilt

3. Layer the quilt with batting and backing and baste. Quilt in the ditch around block patches. Quilt around the printed motifs in the Fabric C patches. Bind to finish the quilt.

Rise Up Quilt



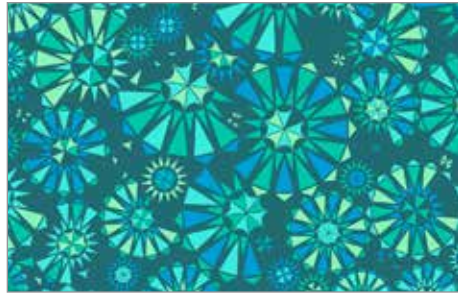
Quilt Diagram

Nara

FABRICS BY FIYEL LEVENT



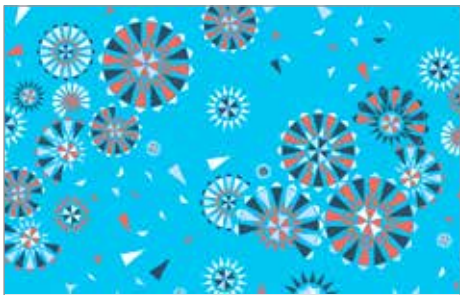
7545-B*



7545-G



7545-R



7546-B*



7546-G



7546-R



7547-B*



7547-G



7547-R



7548-B*



7548-G



7548-R



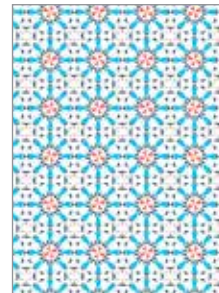
7549-B*



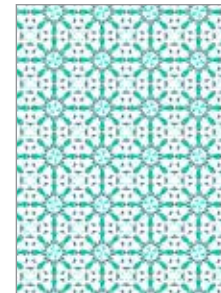
7549-G



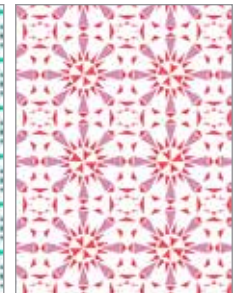
7549-R



7550-B



7550-G



7550-R

All fabrics are used in quilt pattern. Fabrics shown are 25% of actual size.

andover



makower uk
The Henley Studio

Free Pattern Download Available

1384 Broadway New York, NY 10018
Tel. (800) 223-5678 • andoverfabrics.com